

DataTrac Pro for Bluetooth-connected Pumps

User Manual

Publication 1917 Rev 210604

Introduction

Checking System Requirements

Ensure your PC meets minimum requirements for the DataTrac® Pro Software.

Operating System	Microsoft® Windows® 7, 8, 8.1, or 10
Required Software	DataTrac Pro Installer (<i>included with installation</i>)
Minimum Display Resolution	1024 x 768
Available Port	USB 2.0

Checking Hardware Requirements

- USB Bluetooth® Adapter Cat. No. 877-94
- Pocket Pump TOUCH Sample Pump Cat. No. 220-1000TC
- AirChek Connect Sample Pump Cat. No. 220-4000

Getting Started

Connecting Pump to PC

The pump communicates with a PC via USB Bluetooth connection (dongle) and DataTrac Pro Software (*Figure 1*).

Note: *USB Bluetooth Adapter Cat. No. 877-94 is the dedicated and required dongle for Pocket Pump TOUCH and AirChek Connect Pump.*



Figure 1. Communication Train
(Pocket Pump TOUCH shown)

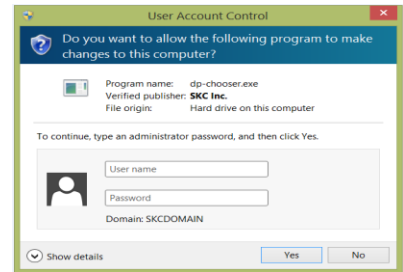
1. Insert the USB Bluetooth Adapter (dongle) in a USB port on the PC.
2. Download and install the DataTrac Pro Installer. See *Downloading/Installing DataTrac Pro Software* below.
3. Launch DataTrac Pro. **DataTrac Pro will only detect pumps that are powered on.** For optimal connection, ensure that pumps are near the PC.

Downloading/Installing DataTrac Pro Software

 **The DataTrac Pro Installer requires administrator privileges to install properly. DataTrac Pro must be installed separately under the Windows user account of each person who will use the software.**

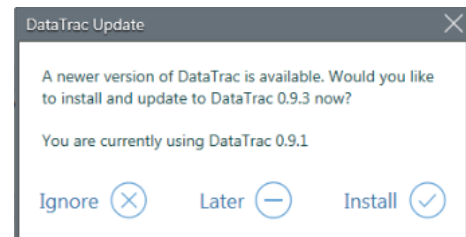
1. Download file located at
www.skinc.com/catalog/datatrac/DataTracProPPT/Setup.exe.

2. Browse to download folder/flash drive, run the setup file, and follow wizard instructions. If the User Account Control display box appears, enter the administrator user ID and password.
3. When installation is complete, DataTrac Pro will launch automatically. Ensure that the dongle remains inserted in a USB port on the PC and pumps are powered **on** when launching and using DataTrac Pro.



Updating DataTrac Pro Software

Launch DataTrac Pro Software. DataTrac Pro will scan automatically for available online updates. If an update is found, the user will be asked to install now, install later (user will be prompted to update each time DataTrac Pro is launched), or ignore (user will be directed to an Update Available link on the Help page).





During the update, the DataTrac Update box (above) will display a progress bar; when the download is complete, DataTrac Pro will launch automatically.

Uninstalling DataTrac Pro Software

1. Access the Windows Control Panel on the PC.
2. Select Programs (Programs and Features in Windows 7).
3. Select DataTrac Pro.
4. Click Uninstall.


Using this Manual

This manual provides graphical guidance to the user. Areas on screens that require user action are highlighted  or . Corresponding text descriptions/details are highlighted in a matching color.

Interacting with DataTrac Pro Software Screens

Click tabs and buttons with mouse to activate or select items. Click in boxes and type using keyboard to enter required information.

Setting Display Preferences for DataTrac Pro

 Before using DataTrac Pro, open the DataTrac Unit Display box to select display preferences for DataTrac Pro and set STP criteria (if required).

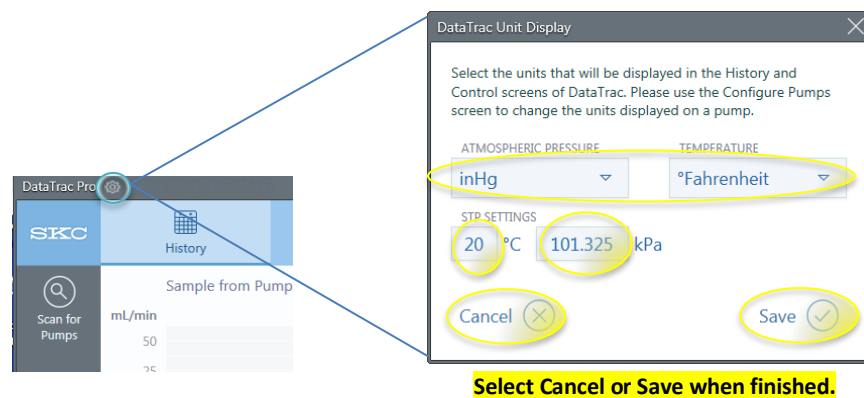



Figure 2. DataTrac Pro Unit Display Box

Using DataTrac Pro Software

 Ensure that USB Bluetooth Adapter is inserted in USB port on PC. Pumps must be powered on to be detected by DataTrac Pro. For optimal connection, ensure that pumps are near the PC. Once communication is established between the PC and the pumps, the pumps will be kept in a wakened state until powered off.

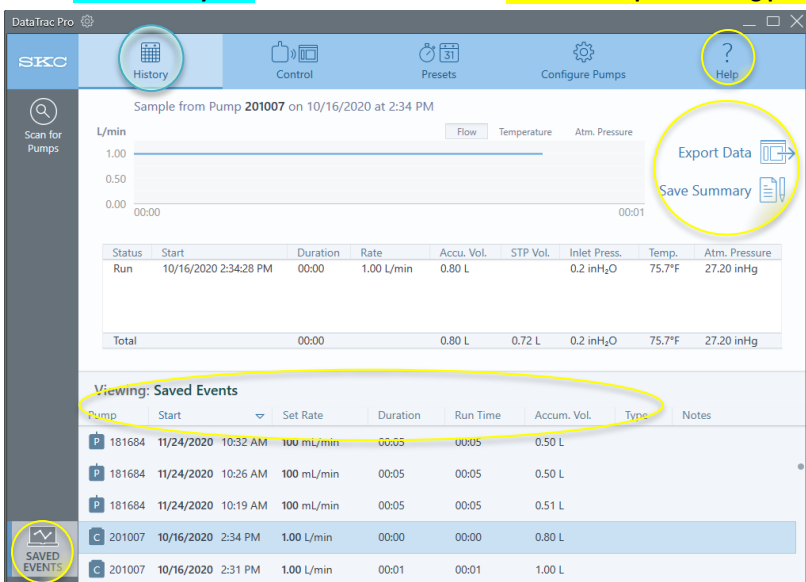
Downloading/Managing Sampling History History Tab

Select History tab.

Get basic help connecting pumps.

Export selected event data or save summary to .csv file for import into spreadsheet. See example in Appendix B.

View, sort, select for export/save previously downloaded sampling events, without connecting pumps.




Status	Start	Duration	Rate	Accu. Vol.	STP Vol.	Inlet Press.	Temp.	Atm. Pressure
Run	10/16/2020 2:34:28 PM	00:00	1.00 L/min	0.80 L		0.2 inH ₂ O	75.7°F	27.20 inHg
Total		00:00		0.80 L	0.72 L	0.2 inH ₂ O	75.7°F	27.20 inHg

Pump	Start	Set Rate	Duration	Run Time	Accum. Vol.	Type	Notes
181684	11/24/2020 10:32 AM	100 mL/min	00:05	00:05	0.50 L		
181684	11/24/2020 10:26 AM	100 mL/min	00:05	00:05	0.50 L		
181684	11/24/2020 10:19 AM	100 mL/min	00:05	00:05	0.51 L		
201007	10/16/2020 2:34 PM	1.00 L/min	00:00	00:00	0.80 L		
201007	10/16/2020 2:31 PM	1.00 L/min	00:01	00:01	1.00 L		

Figure 3. History Tab Prior to Pump Connection

Detecting Pumps

 **Pumps must be powered on to be detected by DataTrac Pro. For optimal connection, ensure that pumps are near the PC.**

Once launched, DataTrac Pro scans for pumps connected by Bluetooth to the PC. Detected pumps are displayed as an icon and serial number in the Pump Display Bar. If pumps do not appear automatically in the bar, click Scan for Pumps.

Select History tab.

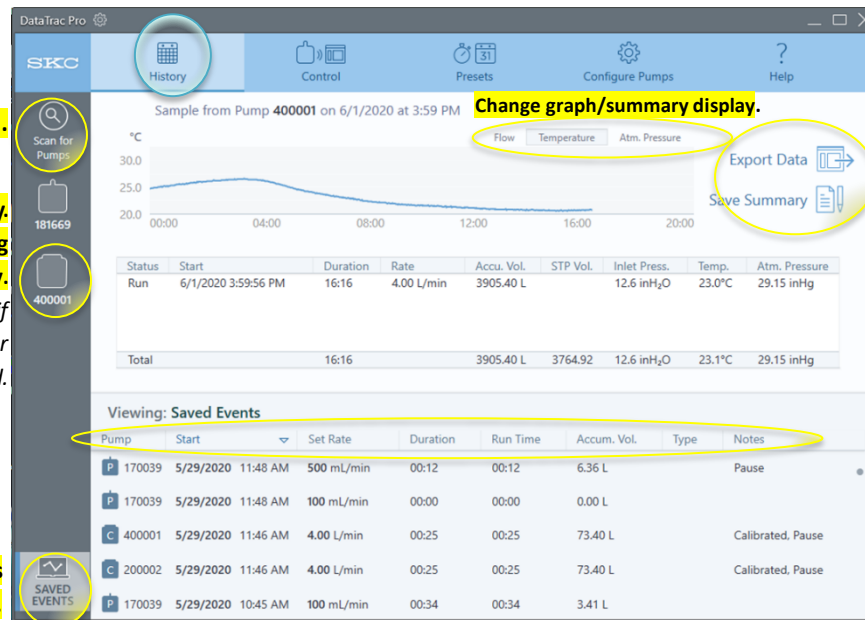
Scan for connected pump(s).

Select pump to download/view history.

Note: Stop pump before downloading history.

Note: "Pump busy" will display if attempted while pump is running or paused.

Display saved events from all pumps.



Export selected event data or save summary to .csv file for import into spreadsheet. See Appendix B.

Sort pump history or saved events by selecting column

Figure 4. History Tab Displaying Connected Pumps

Controlling the Pump

Control Tab

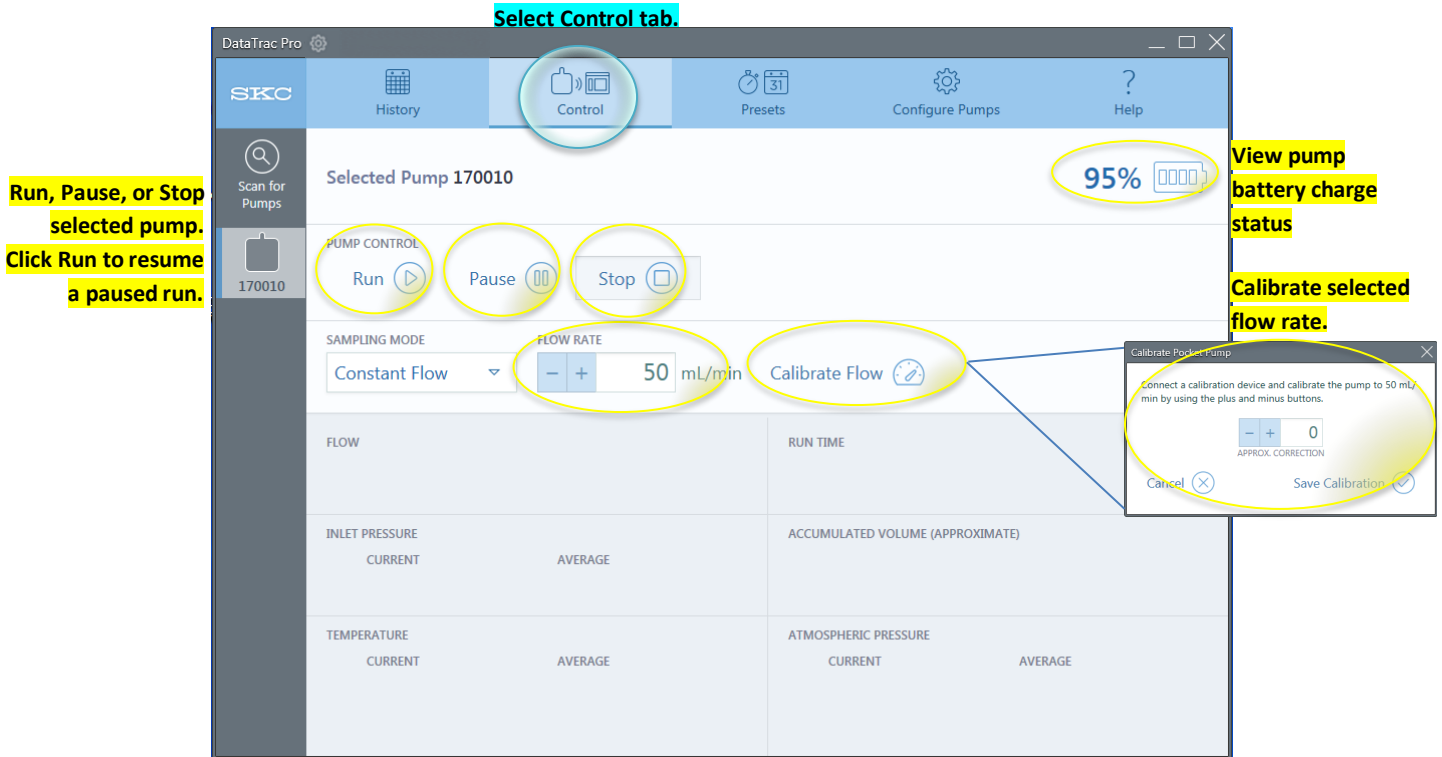


Figure 5. Display Before Run is Clicked

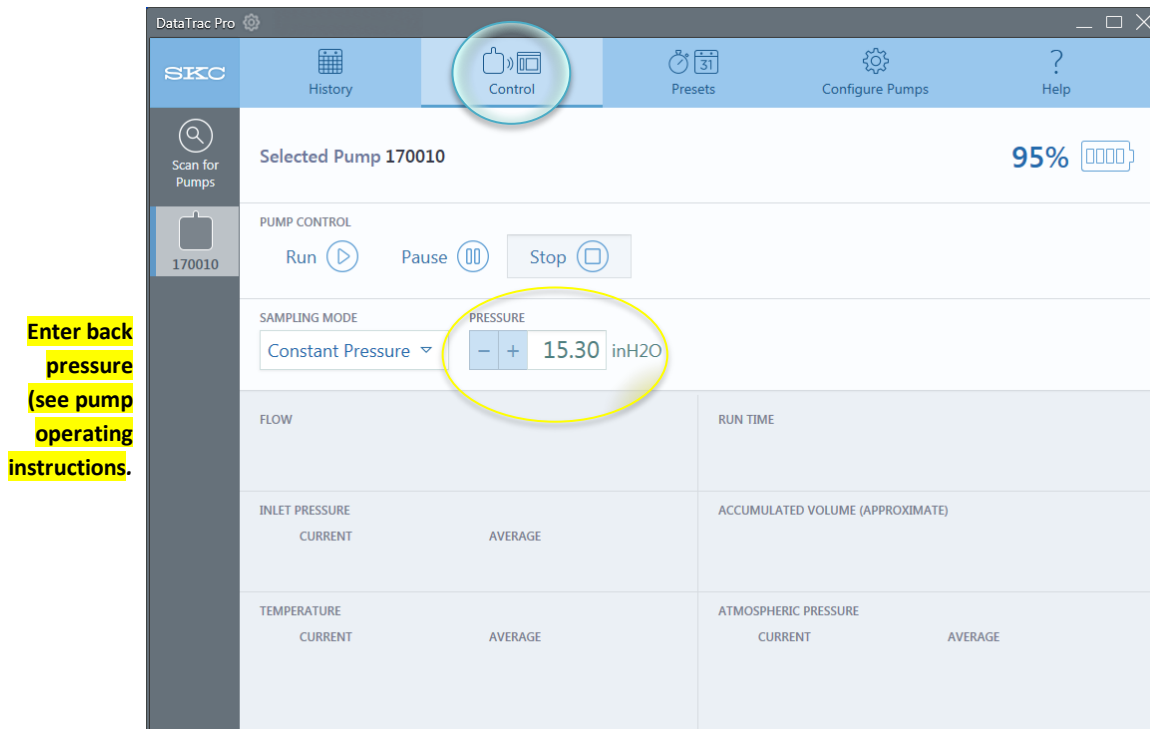


Figure 5a. Constant Pressure Mode Display Before Run is Clicked

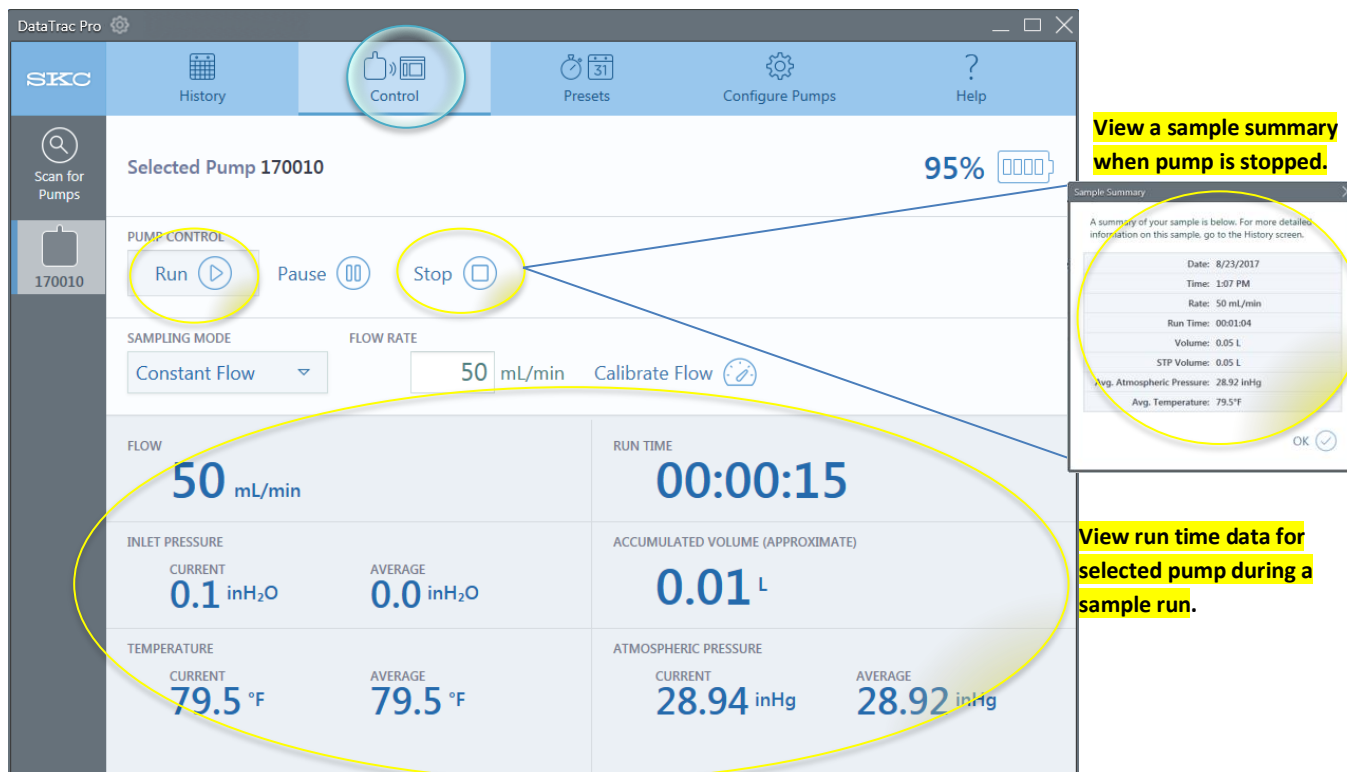


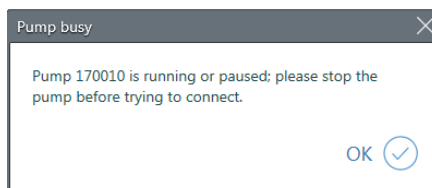
Figure 6. Display After Run is Clicked

Programming and Uploading Sample Presets

Presets Tab



Stop pump before programming presets. “Pump busy” will display if attempted while pump is running or in pause.



Select Presets tab

PRESET 1

MODE
☒ Constant Flow
☐ Constant Pressure

FLOW RATE
 133 mL/min

TIMING
☒ Continuous
☐ Intermittent

DURATION
 00 : 00 : 06
 Day(s) H M

ESTIMATED SAMPLE VOLUME
 0.80 Liters

START TIME
☐ No
☒ Yes
 TIME*
 03:30 PM
 HH:MM

* The pump will automatically start at the prescribed time only after this preset is activated on the pump.

Copy

Copy Preset to Other Pumps

Copy preset 1 from PocketPump 170030 by selecting pumps from the list below:

170023
 170043
 170066

Cancel Copy Preset Now

Select mode and timing (run type); change/enter flow rate and total duration.

Select/enter start time.*

Upload preset to selected pumps. Select first pump, press Shift and click on last pump listed to select all pumps.

PRESET 2

MODE
☒ Constant Flow
☐ Constant Pressure

FLOW RATE
 250 mL/min

TIMING
☐ Continuous
☒ Intermittent

CYCLES
 120

DURATION
 00 : 04 : 00
 Day(s) H M

SAMPLE
 00 : 01
 H M

PAUSE
 00 : 01
 H M

TOTAL SAMPLE TIME
 2 hours

ESTIMATED SAMPLE VOLUME
 30.00 Liters

START TIME
☒ No
☐ Yes

Save

Cancel

Select mode and timing (run type); change/enter flow rate, number of cycles,† total duration,† length of time pump samples, and length of time pump pauses during each cycle.

Select/enter start time.*

Save (upload) or Cancel preset.

† These values are calculated based on the numbers entered. Changing one value will cause the other value to change.

Figure 7. Examples of Continuous and Intermittent Run Presets

Configuring Pumps/Updating Firmware

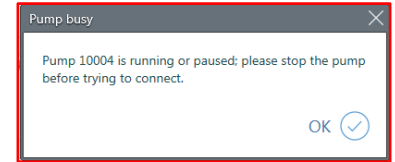
Configure Pumps Tab



Stop pump before configuring pumps or updating firmware.

Updating Firmware

1. Before updating firmware, ensure that the pump is powered on but not running or in pause and the PC is running from AC power. The “Pump busy” box will display if an update is attempted while the pump is running or in pause.
2. Click the Update Firmware button. The File Open dialog box will display. Select the firmware file provided there by SKC.
3. The firmware update process will begin and may take up to 30 minutes. During this time, do not move the pumps from Bluetooth range or power off the PC.



Select Configure Pumps tab.

View number of history records.

View currently installed firmware version number.

Update pump firmware.

Synchronize pump date/time with PC.

Select secure lock.

Change/enter secure lock password.

Select atmospheric pressure and temperature unit display on the pump.

Choose how often selected pump stores data.

Select pump date and time display preferences.

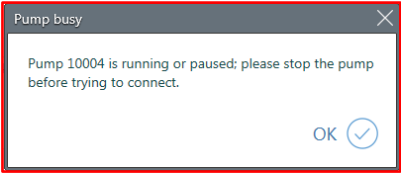
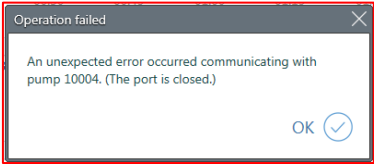
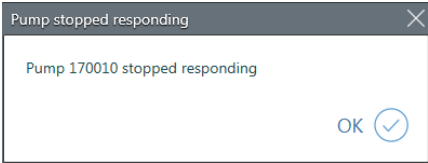
Select auto-dim and auto-lock preferences.

Appears after settings are changed. Select Save Settings to Pump or Cancel. Copy Settings to Other Pumps box will reappear as an option asking you to select desired pumps.

† 1-minute average fills memory in approximately 1 week;
5-minute average fills memory in approximately 1 month.

Figure 8. Configure Pumps Tab

Troubleshooting

Issue	Possible Solutions
<p>I am having difficulty connecting to pump(s).</p>	<ol style="list-style-type: none"> 1. Ensure that USB Bluetooth Adapter is inserted in USB port on PC and that pump is powered on and near Bluetooth Adapter. 2. Relaunch DataTrac Pro and click Scan for Pumps button in Pump Display Bar. 3. Close DataTrac Pro, remove and reinsert Bluetooth Adapter, and relaunch DataTrac Pro. 4. Restart PC.
<p>I keep getting a Pump busy box when I click in the Pump Display Bar or the History, Presets, and Configure Pumps tabs.</p>  <p>The screenshot shows a dialog box titled 'Pump busy' with a close button (X) in the top right corner. The text inside reads: 'Pump 10004 is running or paused; please stop the pump before trying to connect.' At the bottom right, there is an 'OK' button and a checkmark icon.</p>	<p>The pump is running or in pause. Stop the pump to access History, Presets, and Configure Pumps functions.</p>
<p>This Operation failed box appeared on my PC.</p>  <p>The screenshot shows a dialog box titled 'Operation failed' with a close button (X) in the top right corner. The text inside reads: 'An unexpected error occurred communicating with pump 10004. (The port is closed.)' At the bottom right, there is an 'OK' button and a checkmark icon.</p>	<ol style="list-style-type: none"> 1. Ensure that USB Bluetooth Adapter is inserted in USB port on PC and that pump is powered on and nearby. 2. Check AC power connection. 3. Relaunch DataTrac Pro and click Scan for Pumps button in Pump Display Bar. 4. Close DataTrac Pro, remove and reinsert USB Bluetooth Adapter, and relaunch DataTrac Pro.
<p>Pump stopped responding box appeared on my PC.</p>  <p>The screenshot shows a dialog box titled 'Pump stopped responding' with a close button (X) in the top right corner. The text inside reads: 'Pump 170010 stopped responding' At the bottom right, there is an 'OK' button and a checkmark icon.</p>	<p>Select pump again. If pump does not respond, relaunch DataTrac Pro. Ensure that pump is powered on before relaunching.</p>

Software Notes

Version	What's New
---------	------------

V.1.2.6	- Issue version
---------	-----------------

V.1.3.9	- Added support for AirChek Connect, includes ACConnect firmware 0.8.03; added PPTouch firmware 1.4.02; and fixed battery indication in control tab.
---------	--

V.1.3.10	- Fixed connection to Pocket Pump TOUCH pumps made in 2020 and later.
----------	---

Appendices

Appendix A

SKC End-user License Agreement

NOTICE TO USER: This is a contract. By installing this software, you accept all the terms and conditions of this End-user License Agreement (EULA). If you do not agree with the terms and conditions shown below, do not install the software.

GENERAL TERMS AND CONDITIONS - This software (the "SOFTWARE") is owned by SKC Inc. ("SKC") and protected by copyright law. SKC gives the user (the "USER") certain rights to use the SOFTWARE after acceptance of the terms and conditions of this EULA.

The USER may:

- Use the SOFTWARE on more than one computer.

The USER may not:

- Use the SOFTWARE with improperly licensed SOFTWARE. The SOFTWARE must be supported by properly licensed SOFTWARE.
- Reverse engineer, decompile, disassemble, modify, translate, make any attempt to discover the source code, or otherwise plagiarize the SOFTWARE.

LIMITED WARRANTY - SKC does not warrant that the SOFTWARE will meet your requirements or that the SOFTWARE is error-free.

THE WARRANTY IS EXCLUSIVE AND IN LIEU OF ALL OTHER WARRANTIES, WHETHER EXPRESS OR IMPLIED, INCLUDING IMPLIED WARRANTIES OF MERCHANTABILITY, FITNESS FOR A PARTICULAR PURPOSE AND NON-INFRINGEMENT. THIS WARRANTY GIVES YOU SPECIFIC LEGAL RIGHTS. YOU MAY HAVE OTHER RIGHTS WHICH VARY FROM STATE TO STATE.

DISCLAIMER OF DAMAGES - USER SHALL NOT BE ENTITLED TO RECOVER FROM SKC INC. ANY CONSEQUENTIAL DAMAGES, DAMAGES FROM USE OF THE SOFTWARE WITH IMPROPERLY LICENSED SOFTWARE, DAMAGES TO PROPERTY, DAMAGES FOR LOSS OF USE, LOSS OF TIME, LOSS OF PROFITS, INCOME, DATA OR OTHER INCIDENTAL DAMAGES ARISING OUT OF THE USE OR INABILITY TO USE THE SOFTWARE. SOME STATES DO NOT ALLOW THE LIMITATION OR EXCLUSION OF LIABILITY FOR INCIDENTAL OR CONSEQUENTIAL DAMAGES TO THE ABOVE LIMITATION OR EXCLUSION MAY NOT APPLY TO YOU.

EXPORT CONTROLS

None of the Software or underlying information or technology may be downloaded or otherwise exported or re-exported (i) into (or to a national of) any country to which the U.S. has embargoed goods; or (ii) to anyone on the U.S. Treasury Department's list of Specially Designated Nationals or the U.S. Commerce Department's Table of Deny Orders. By downloading or using the Software, you are agreeing to the foregoing and you are representing and warranting that you are not located in, under control of, or a national or resident of any such country or on any such list.

U.S. GOVERNMENT END USERS - This EULA conveys only restricted rights, and its use, disclosure, and duplication are subject to FAR 52.227-7013(c)(1)(ii).

GOVERNING LAW AND GENERAL PROVISIONS - This EULA shall be construed under the laws of the Commonwealth of Pennsylvania which shall be deemed to be the situs of the EULA with SKC. This EULA will not be governed by the United Nations Convention or Contracts for the International Sale of Goods, the application of which is expressly excluded. If any part of this EULA is found void and unenforceable, it will not affect the validity of the balance of the EULA, which shall remain valid and enforceable according to its terms. The USER agrees that the SOFTWARE will not be shipped, transferred or exported into any country or used in any manner prohibited by the U.S. Export Administration Act or any other export laws, restrictions or regulations. No other right is given by SKC in conjunction with this EULA.

Appendix B

Exported Sample Event Data Imported into Microsoft Excel

Note: AirChek Connect pump exported data includes actual flow.

Pocket Pump 170010 Sample201708281130 - Microsoft Excel

	A	B	C	D	E	F	G	H	I	J	K	L	M
1	Timestamp	Elapsed Time	Run State	Set Flow (mL/min)	Accumulated Vol (L)	STP Vol (L)	Inlet Press (inH2O)	Temperature (F)	Atmospheric Press (inHg)	Battery Voltage (V)	Battery Percent	DAC Output Counts	Fault Count
2	8/28/2017 11:26	0:00:00	ManualStart	100	0	0	0.1	74.3	29.11	4.008	99	0	0
3	8/28/2017 11:27	0:00:51	FlowFault	100	0.085	0.081	1.4	74.5	29.13	4.024	97	705	1
4	8/28/2017 11:27	0:00:59	Normal	0	0.085	0.081	27.5	74.7	29.11	4.027	97	578	0
5	8/28/2017 11:28	0:01:59	Normal	100	0.198	0.19	0.5	74.5	29.12	4.042	97	494	0
6	8/28/2017 11:28	0:02:07	ManualPause	100	0.211	0.202	0.1	74.8	29.12	4.011	97	494	0
7	8/28/2017 11:28	0:02:10	ManualResume	100	0.211	0.202	0.2	74.8	29.14	4.011	97	0	0
8	8/28/2017 11:28	0:02:22	ManualStop	100	0.231	0.221	0	74.7	29.12	4.018	97	494	0
9													
10													
11													
12													
13													
14													
15													
16													
17													
18													
19													
20													
21													
22													
23													
24													
25													
26													
27													
28													
29													
30													
31													
32													

AutoSave - Connect Pump 201007 Sample 202101290930.csv - Status: Incomplete

	A	B	C	D	E	F	G	H	I	J	K	L	M	N
1	Timestamp	Elapsed Time	Run State	Set Flow (L/min)	Accumulated Volume	STP Volume (L)	Inlet Pressure (inH2C)	Temperature (F)	Atmospheric Pressure (inHg)	Battery Voltage (V)	Battery Percent	DAC Output Counts	Fault Count	Actual Flow (L/min)
2	1/29/2021 8:50	0:00:00	ManualStart	2.2	0	0	0	32	0	0	0	0	0	0
3	1/29/2021 8:51	0:01:00	Normal	2.2	2.2	2.157	6.2	67.1	29.29	7.171	5	1269	0	2.18
4	1/29/2021 8:52	0:02:00	Normal	2.2	4.4	4.312	6.4	67.5	29.29	7.149	5	1281	0	2.2
5	1/29/2021 8:53	0:03:00	Normal	2.2	6.6	6.467	6.4	67.6	29.3	7.115	5	1292	0	2.2
6	1/29/2021 8:54	0:04:00	Normal	2.2	8.8	8.623	6.4	67.6	29.3	7.038	5	1293	0	2.2
7	1/29/2021 8:55	0:05:00	Normal	2.2	11	10.779	6.4	67.6	29.3	7.052	5	1306	0	2.2
8	1/29/2021 8:56	0:06:00	Normal	2.2	13.2	12.935	6.4	67.6	29.3	7.046	5	1307	0	2.2
9	1/29/2021 8:57	0:07:00	Normal	2.2	15.4	15.091	6.3	67.6	29.3	7.077	5	1310	0	2.2
10	1/29/2021 8:58	0:08:00	Normal	2.2	17.6	17.246	6.4	67.6	29.3	7.019	5	1291	0	2.2
11	1/29/2021 8:59	0:09:00	Normal	2.2	19.8	19.402	6.4	67.6	29.3	7.011	5	1312	0	2.2
12	1/29/2021 9:00	0:10:00	Normal	2.2	22	21.551	6.3	67.8	29.3	7.035	5	1313	0	2.2
13	1/29/2021 9:01	0:11:00	Normal	2.2	24.2	23.706	6.4	67.8	29.3	6.984	5	1317	0	2.2
14	1/29/2021 9:02	0:12:00	Normal	2.2	26.4	25.861	6.4	67.8	29.3	7.006	5	1319	0	2.19
15	1/29/2021 9:03	0:13:00	Normal	2.2	28.6	28.025	6.3	67.6	29.3	6.988	5	1319	0	2.2
16	1/29/2021 9:04	0:14:00	Normal	2.2	30.8	30.171	6.4	67.8	29.3	6.971	5	1317	0	2.2
17	1/29/2021 9:05	0:15:00	Normal	2.2	33	32.326	6.3	67.8	29.3	6.943	5	1319	0	2.2
18	1/29/2021 9:06	0:16:00	Normal	2.2	35.2	34.481	6.4	67.8	29.3	6.911	5	1324	0	2.2
19	1/29/2021 9:07	0:17:00	Normal	2.2	37.4	36.636	6.3	67.8	29.3	6.955	5	1326	0	2.2
20	1/29/2021 9:08	0:18:00	Normal	2.2	39.6	38.791	6.3	67.8	29.3	6.936	5	1329	0	2.2
21	1/29/2021 9:09	0:19:00	Normal	2.2	41.8	40.96	6.5	67.8	29.31	6.91	5	1329	0	2.2
22	1/29/2021 9:10	0:20:00	Normal	2.2	44	43.101	6.3	67.8	29.3	6.887	5	1323	0	2.2
23	1/29/2021 9:11	0:21:00	Normal	2.2	46.2	45.256	6.3	67.8	29.3	6.896	5	1326	0	2.2
24	1/29/2021 9:12	0:22:00	Normal	2.2	48.4	47.411	6.3	67.8	29.3	6.876	5	1319	0	2.2
25	1/29/2021 9:13	0:23:00	Normal	2.2	50.6	49.566	6.3	67.8	29.3	6.84	5	1326	0	2.2
26	1/29/2021 9:14	0:24:00	Normal	2.2	52.8	51.704	6.3	68	29.3	6.839	5	1323	0	2.2



863 Valley View Road, Eighty Four, PA 15330 USA • 724-941-9701•skcinc.com